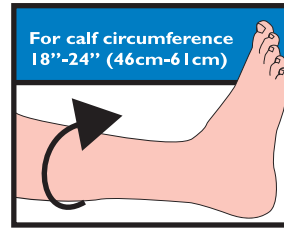


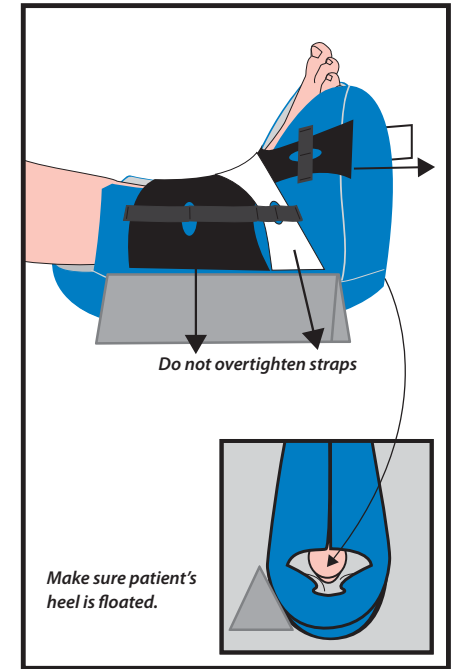
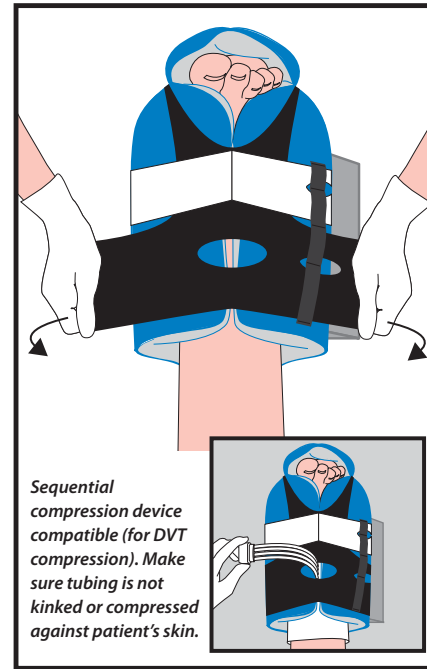
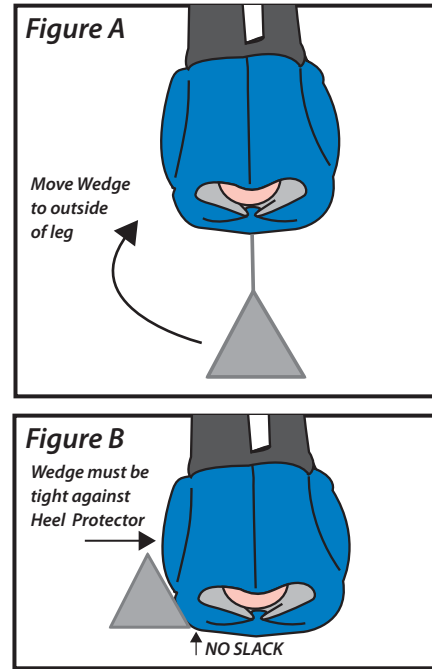
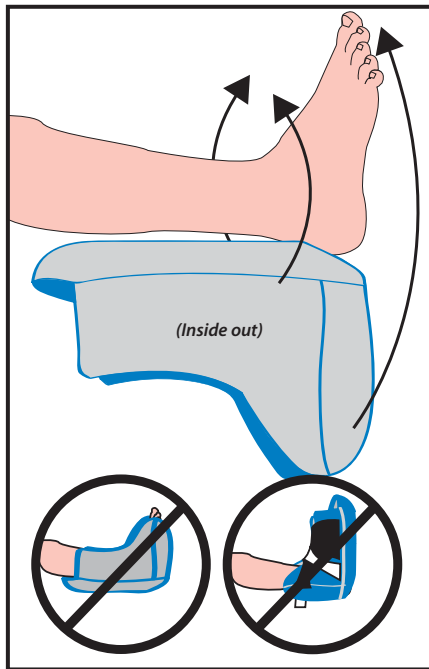
Prevalon[®] XL

Pressure-Relieving Heel Protector



Instructions for Use:

- 1** Position heel over opening. Pull Heel Protector up around foot. Pull front of Heel Protector up around toes.
- 2** Position Integrated Wedge on outside of leg (lateral side). Apply pressure to affix to side of Heel Protector. Reposition as appropriate.
- 3** Wrap stretch panels around boot.
- 4** Adjust straps. **DO NOT** overtighten.



CAUTION: For use on patient while in bed.
DO NOT allow patient to stand or walk while wearing.
 Periodically remove Prevalon[®] to assess skin according to protocol.
Cleaning Instructions: Prevalon[®] can be wiped clean with a damp cloth during use.
 Latex free

U.S. Patent # D542,921. Other patents pending.

21377

Manufactured in the U.S.A. for:

SAGE[®]
 PRODUCTS INC

3909 Three Oaks Road • Cary, Illinois 60013
 800-323-2220 • www.sageproducts.com

Reorder # **7382**